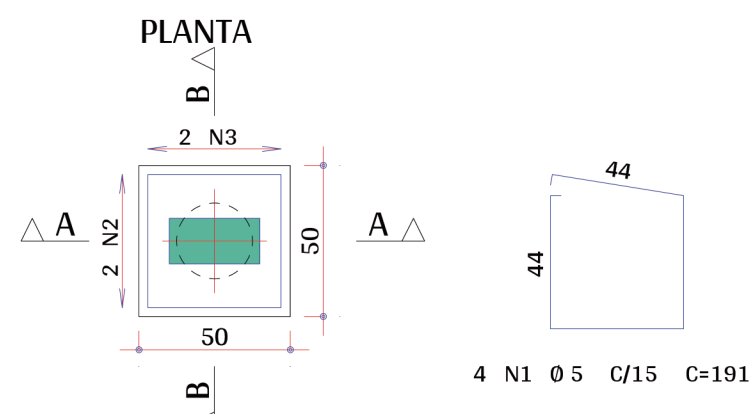
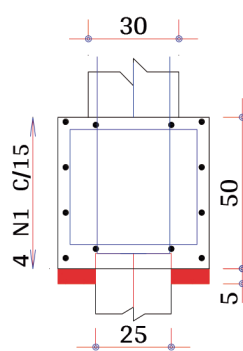


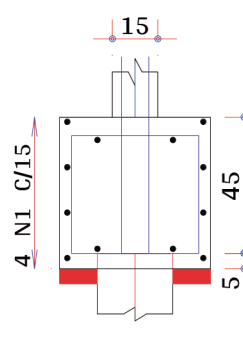
B1
(ESCALA 1:25)



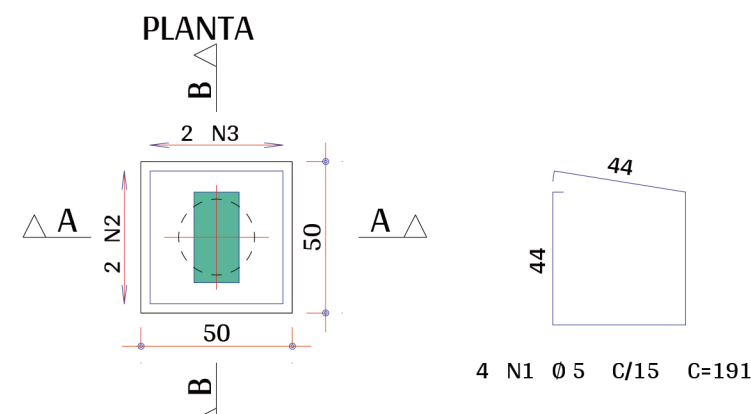
CORTE A - A



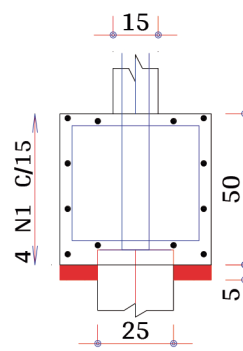
CORTE B - B



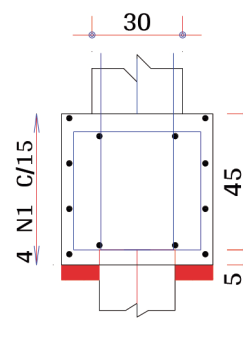
B2
(ESCALA 1:25)



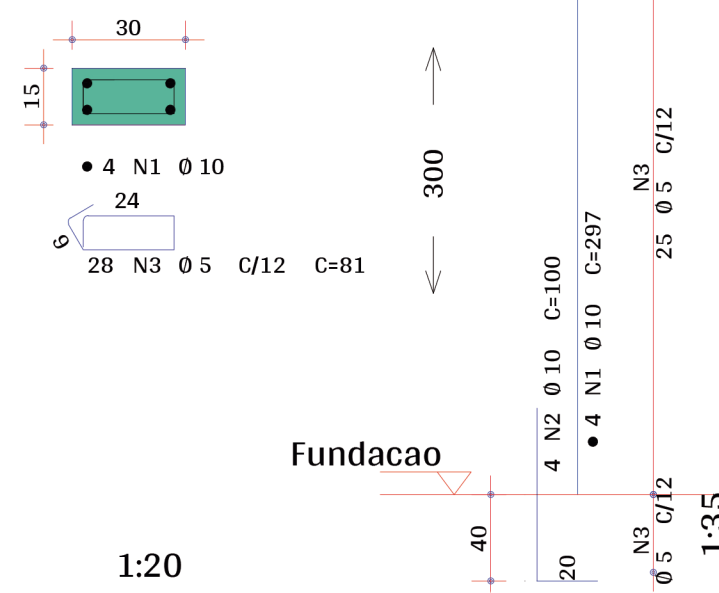
CORTE A - A



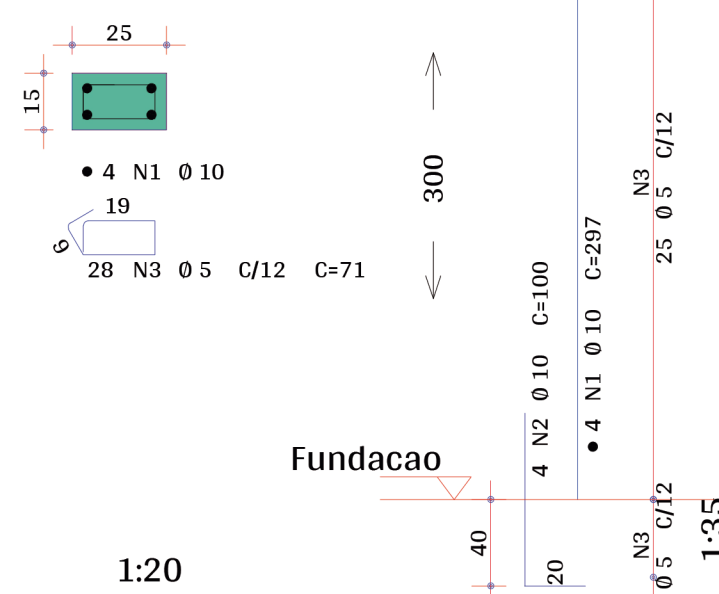
CORTE B - B



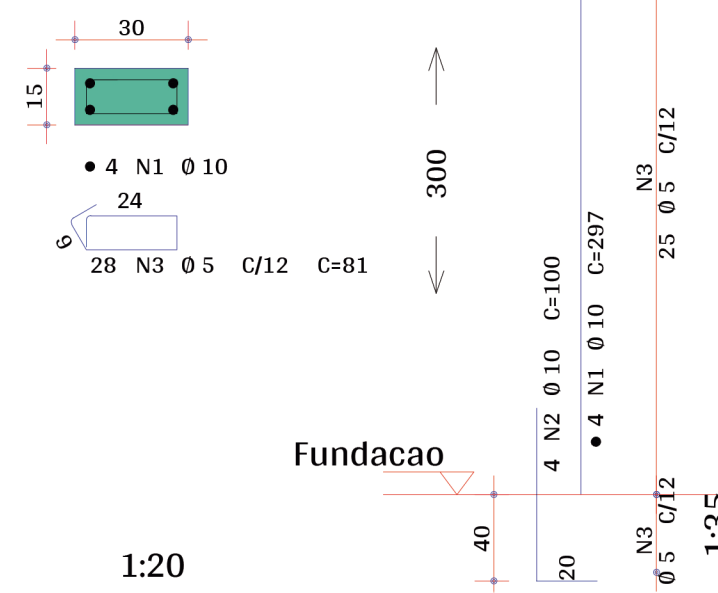
P1 Lance 1
Primeiro



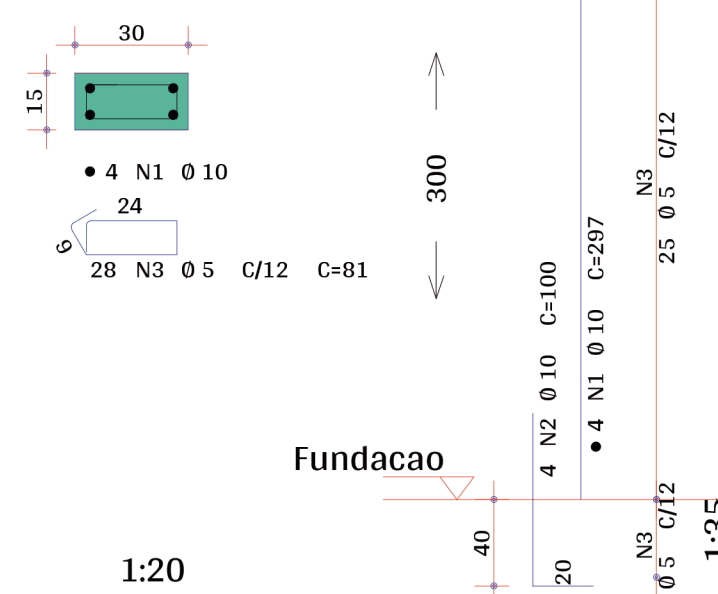
P4 Lance 1
Primeiro



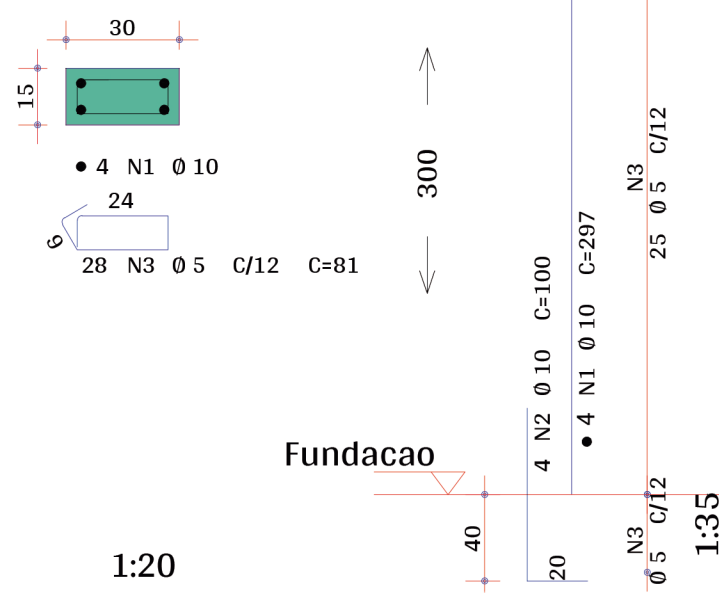
P2 Lance 1
Primeiro



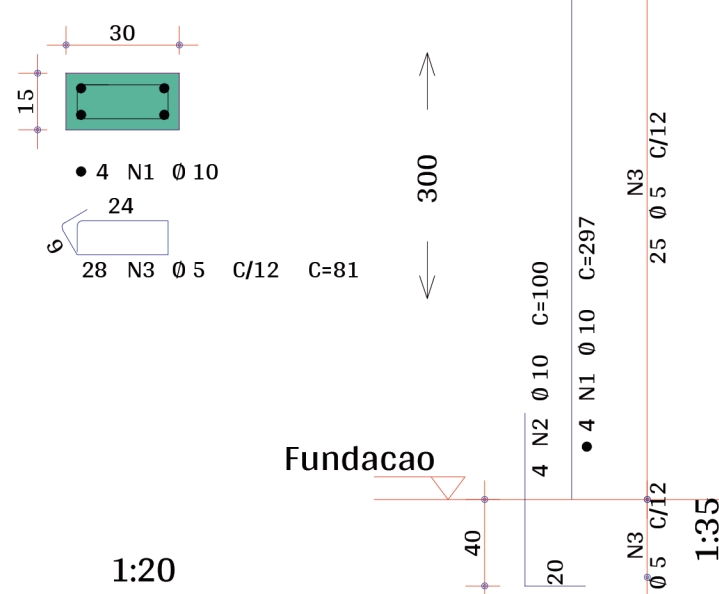
P5 Lance 1
Primeiro



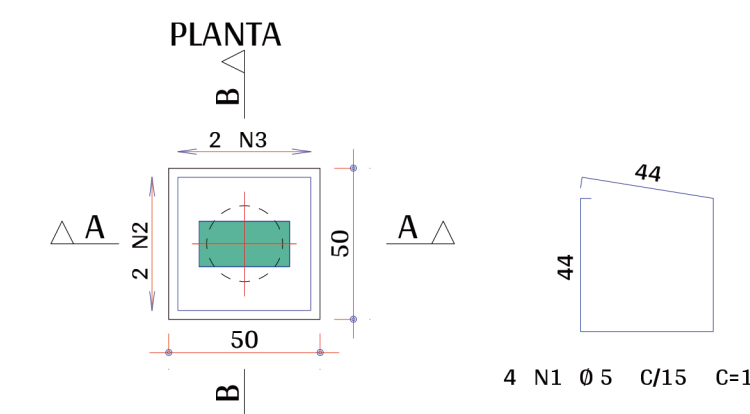
P3 Lance 1
Primeiro



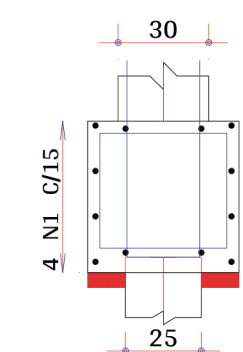
P6 Lance 1
Primeiro



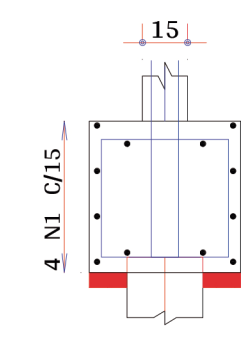
B3
(ESCALA 1:25)



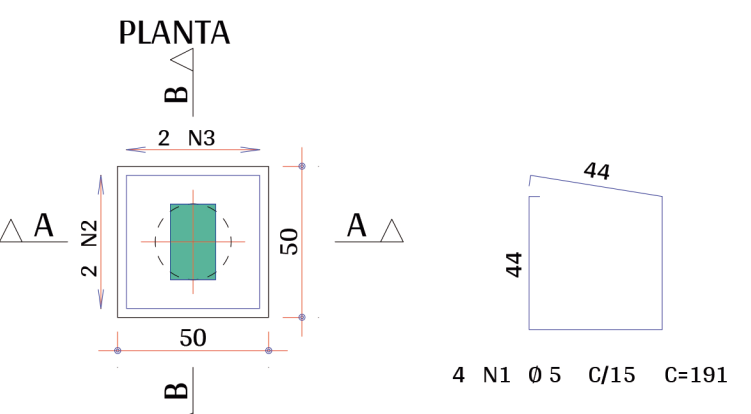
CORTE A - A



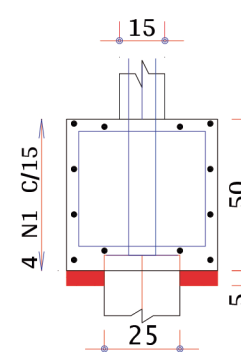
CORTE B - B



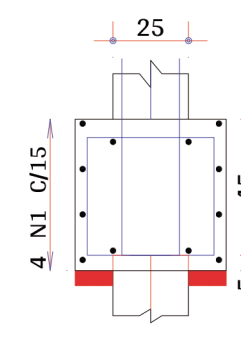
B4
(ESCALA 1:25)



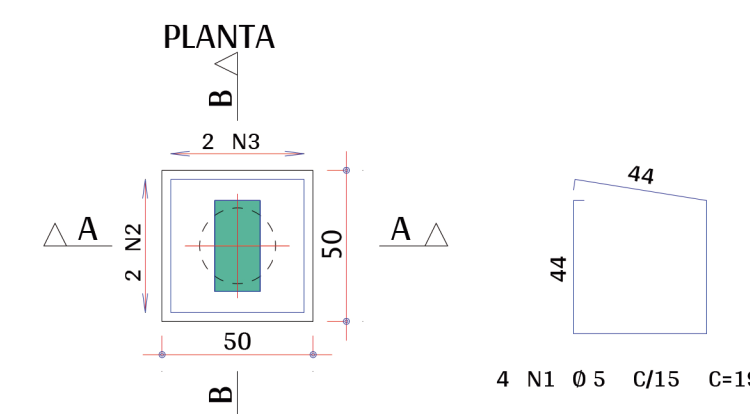
CORTE A - A



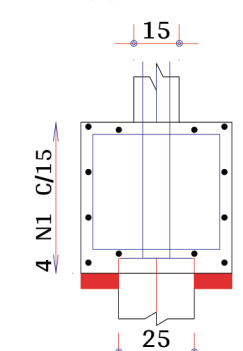
CORTE B - B



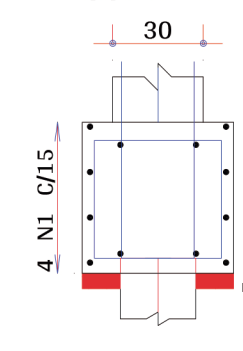
B5
(ESCALA 1:25)



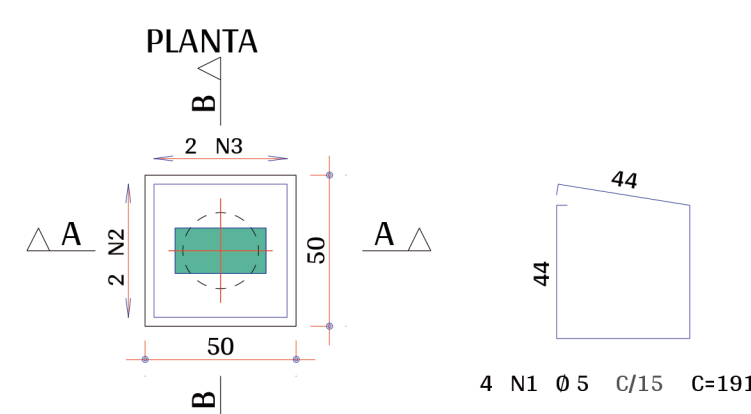
CORTE A - A



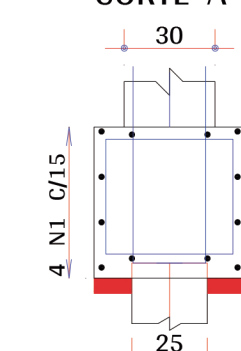
CORTE B - B



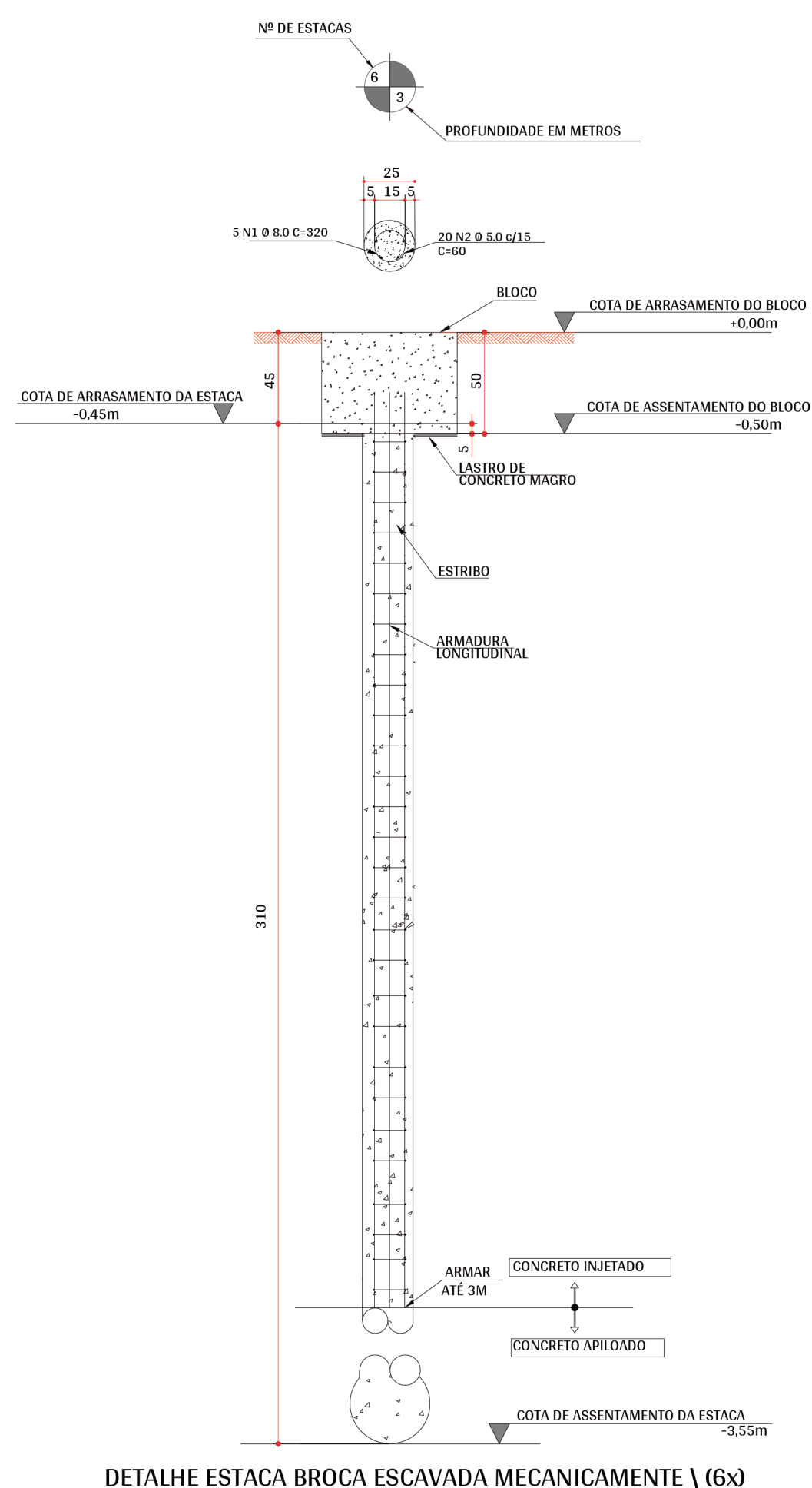
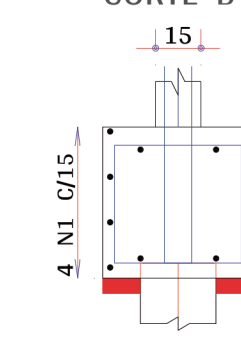
B6
(ESCALA 1:25)



CORTE A - A



CORTE B - B



	AÇO	POS	BIT mm	QUANT	COMPRIMENTO	
					UNIT	TOTAL
					cm	cm
B1	60A	1	5	4	191	764
	50A	2	10	2	183	366
	50A	3	10	2	185	370
B2	60A	1	5	4	191	764
	50A	2	10	2	183	366
	50A	3	10	2	185	370
B3	60A	1	5	4	191	764
	50A	2	10	2	183	366
	50A	3	10	2	185	370
B4	60A	1	5	4	191	764
	50A	2	10	2	183	366
	50A	3	10	2	185	370
B5	60A	1	5	4	191	764
	50A	2	10	2	183	366
	50A	3	10	2	185	370
B6	60A	1	5	4	191	764
	50A	2	10	2	183	366
	50A	3	10	2	185	370

RESUMO DE AÇO DOS BLOCOS			
AÇO	BIT	COMPR	PESO
		mm	m
60A	5	46	8
50A	10	47	30
Peso Total 60A =			8 kgf
Peso Total 50A =			30 kgf

AÇO		POS	BIT	QUANT	COMPRIMENTO	TOTAL
			mm		UNIT	cm
P1 Lance 1	50A	1	10	4	297	1188
	50A	2	10	4	100	320
	60A	3	5	28	81	2268
P2 Lance 1	50A	1	10	4	297	1188
	50A	2	10	4	100	400
	60A	3	5	28	81	2268
P3 Lance 1	50A	1	10	4	297	1188
	50A	2	10	4	100	400
	60A	3	5	28	81	2268
P4 Lance 1	50A	1	10	4	297	1188
	50A	2	10	4	100	400
	60A	3	5	28	71	1988
P5 Lance 1	50A	1	10	4	297	1188
	50A	2	10	4	100	400
	60A	3	5	28	81	2268
P6 Lance 1	50A	1	10	4	297	1188
	50A	2	10	4	100	400
	60A	3	5	28	81	2268

RESUMO DE AÇO DOS PILARES			
AÇO	BIT	COMPR	PESO
		mm	m
60A	5	133	21
50A	10	95	60
Peso Total 60A =			21 kgf
Peso Total 50A =			60 kgf

TABELA DE AÇO						
FUNDAÇÃO - ESTACAS TIPO BROCA DE 3 m						
AÇO	POSICÃO	BITOLA (mm)	QUANTIDADE		COMPRIMENTO	
			UNITÁRIO (cm)	TOTAL (m)	UNITÁRIO (cm)	TOTAL (m)
50A	1	8,0	30	330	60	96,00
60A	2	5,0	120	60	60	72,00
RESUMO AÇO CA-50 E CA-60						
AÇO	BITOLA (mm)	COMPRIMENTO (m)	PESO LINEAR (kg/m)	PESO (kg)	PESO + 10% (kg)	QUANTIDADE TOTAL DE BARRAS
CA-60	5,0	72,00	0,1543	11,11	12,22	6 ca 12 m
CA-50	8,0	96,00	0,3949	37,91	41,70	8 ca 12 m
			PESO TOTAL CA - 50		41,70	Kg
			PESO TOTAL CA - 60		12,22	Kg



PREFEITURA MUNICIPAL DE AGUDOS				FOLHA:
PROJETO: CONSTRUÇÃO DA PRAÇA DO TURISTA				02/04
ASSUNTO: PLANTA BLOCOS/ESTACAS E PILARES QUIOSQUE 01 e 02				REVISÃO: REV_A
RESPONSÁVEL TÉCNICO: RAFAEL AMANCIO PIOTTO				DATA: 24/02/2022
DESENHO: RAFAEL AMANCIO PIOTTO				ESCALA: 1:25

Daniel Stephany Domingues Bernardes
CREA: 5069745960/SP
ART: 28027230221870753
Responsável Técnico do Convênio

RESPONSÁVEL TÉCNICO:
RAFAEL AMANCIO PIOTTO
CAU/SP: A-2658666
RRT: SI11722057R06CT001